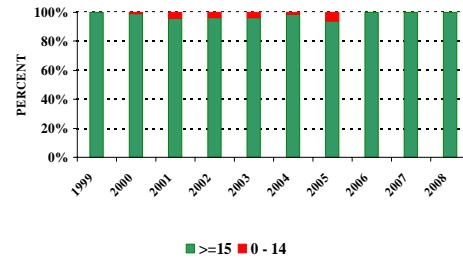


Iranian New Leprosy Cases by Age group (I.R.IRAN- 2008)

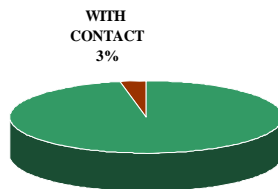


>=15year
100%

Trend of Relative Frequency of Leprosy (by Age group) Among Iranian New Cases (I.R.IRAN ; 1999-2008)



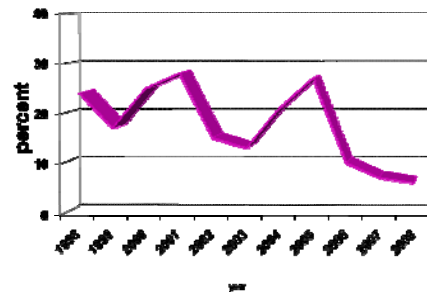
Iranian New Leprosy Cases by History of Close Contact (I.R.IRAN- 2008)



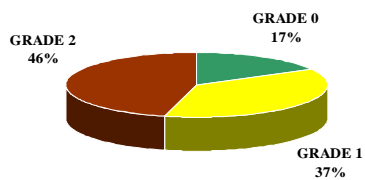
WITH CONTACT
3%

WITHOUT CONTACT
97%

Trend of having close contact history among Iranian new leprosy cases (I.R.IRAN, 1998 - 2008)



Iranian New Leprosy Cases by Disability Grading (I.R.IRAN- 2008)

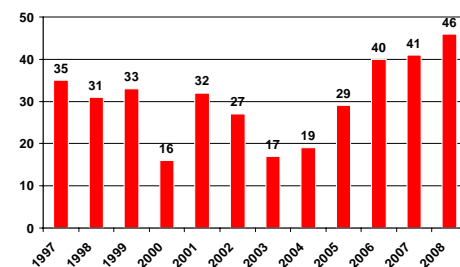


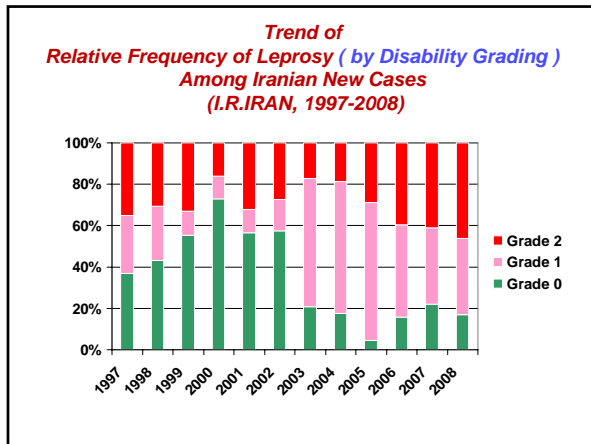
GRADE 2
46%

GRADE 0
17%

GRADE 1
37%

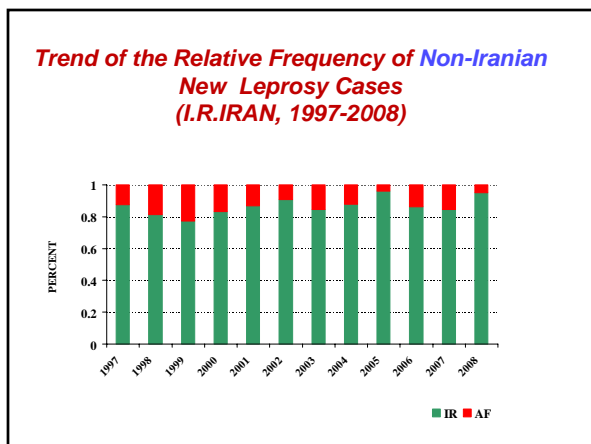
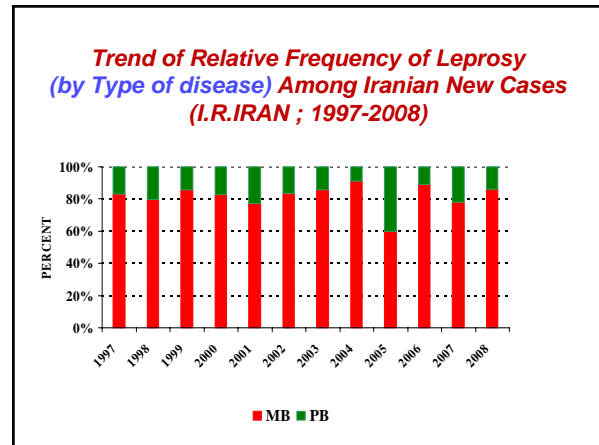
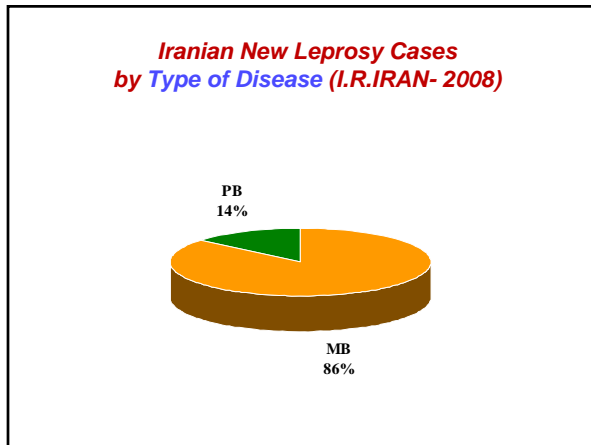
Trend of the Percentage of Iranian New Leprosy Cases who have had Grade 2 Disability (I.R.IRAN, 1997-2008)





Incidence rate of leprosy induced grade2 disability (I.R.IRAN, 1998 - 2008)

Year	Per 100000	Percentage of reduction
1998	0.035	
1999	0.041	
2000	0.025	
2001	0.039	
2002	0.034	
2003	0.015	
2004	0.022	
2005	0.037	
2006	0.036	-4
2007	0.015	-58
2008	0.022	-40



Leprosy situation among Non-Iranian cases

	Number	%
Area of residence :		
urban	2	100
Age group :		
under 15 y/o	0	0
Gender :		
Female	0	0
Type of Leprosy :		
MB	2	100
PB	0	0
Grade of disability :		
G0 disability	0	0
G1 disability	2	0
G2 disability	0	100
Having history of Close contact	0	0

**P/D RATIO
I.R.IRAN-(2000-2008)**

	Prevalence	Detection	P/D Ratio
2000	577	105	5.5
2001	447	88	5.07
2002	239	88	2.7
2003	139	66	2.1
2004	160	92	1.7
2005	181	90	2
2006	163	73	2.2
2007	76	32	2.3
2008	58	35	1.6

