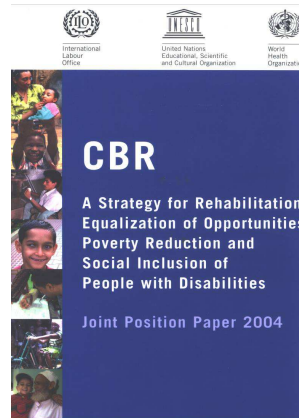


## Primary Health Care (PHC) 30 years of Alma-Ata

The World Health Report 2008  
*Primary Health Care*  
**Now  
More  
Than  
Ever**  
World Health Organization

## CBR Joint Position Paper ILO, UNESCO & WHO (2004)

- CBR is a strategy for
  - “ Rehabilitation
  - “ equalization of opportunities
  - “ **poverty reduction**
  - “ social inclusion
- CBR is a multisectoral strategy



## WHO/ILEP Technical guide on community-based rehabilitation and leprosy

- *Meeting the rehabilitation needs of people affected by leprosy and promoting quality of life*



## WHO/ILEP Technical Guide

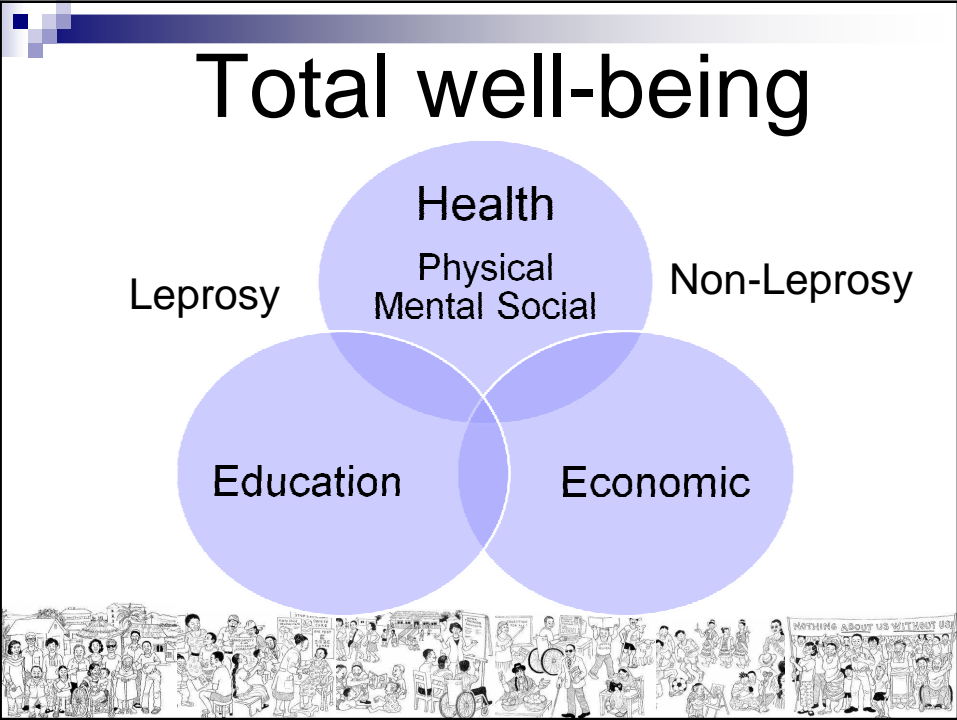
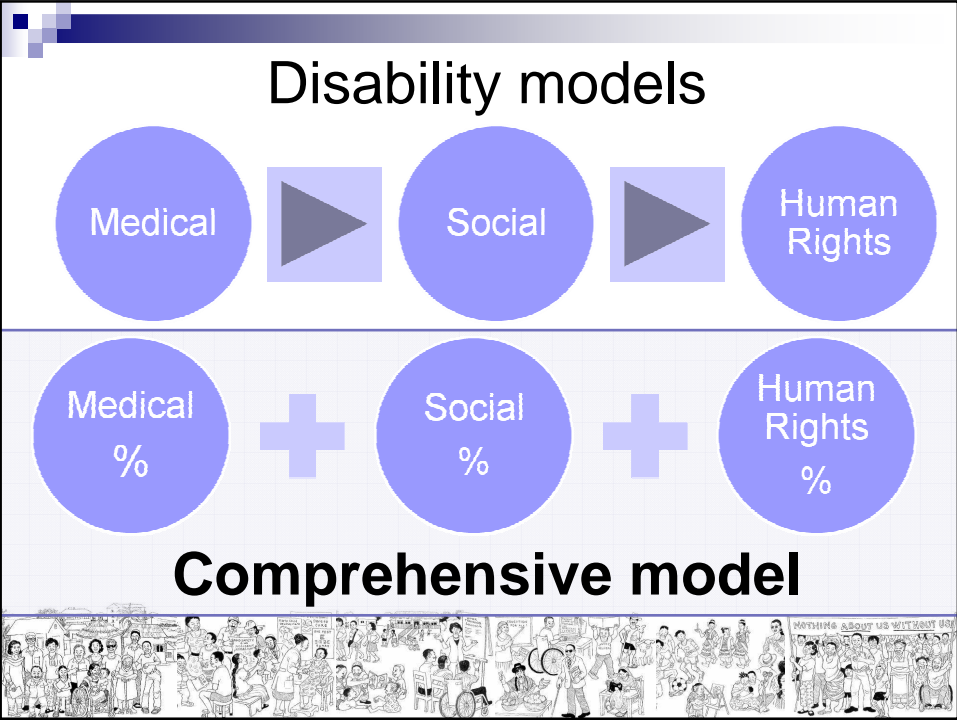
- Due to the stigma and disabilities resulting from leprosy, people affected have suffered reduced opportunities and experienced many forms of social exclusion – all in the context of a **poverty-related disease**
- CBR, according to its current definition, is highly relevant to the rehabilitation of people affected by leprosy

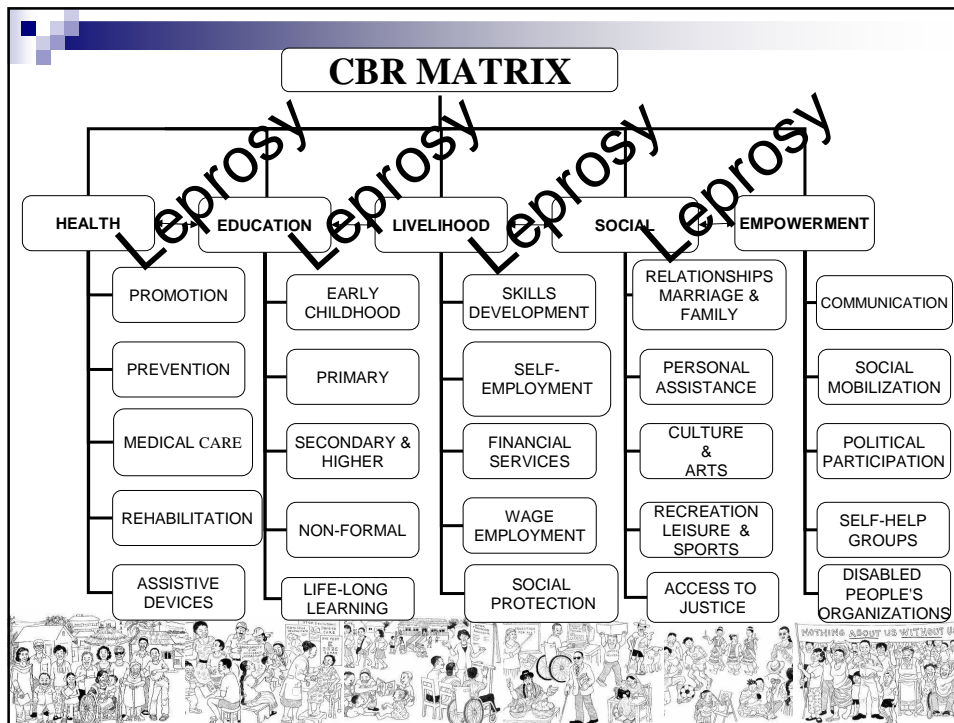


## Poverty and Disability

- Majority of people with disabilities/leprosy live in chronic poverty
- Poverty is not just the lack of money or income, it has many facets.
- Poverty erodes or nullifies economic and social rights such as the right to health, education, livelihood. inclusion.....







## CBR Matrix and its Aim

- Assist in **poverty reduction** and its various facets
- Empower to affirm **human rights**
- Promote **quality of life and well-being** of people with disabilities and their families

**Facilitate Inclusive Development for people with disabilities including people with leprosy and their families.**



## CBR guidelines – Table of content

- INTRODUCTION
- MANAGEMENT OF CBR
- HEALTH
- EDUCATION
- LIVELIHOOD
- SOCIAL
- EMPOWERMENT
- SUPPLEMENT CHAPTERS
  - CBR and Crisis Situations
  - CBR and HIV/AIDS
  - CBR and Mental Health
  - CBR and Leprosy
- WHO/ILEP Technical Guide on CBR & Leprosy

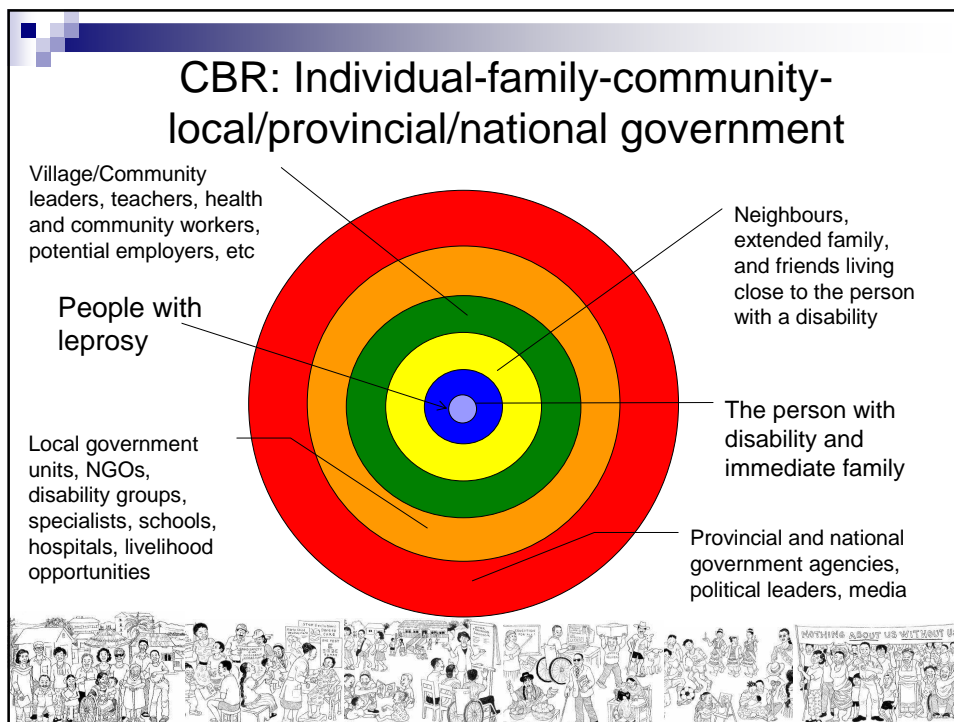


## CBR and Leprosy

### Purpose :

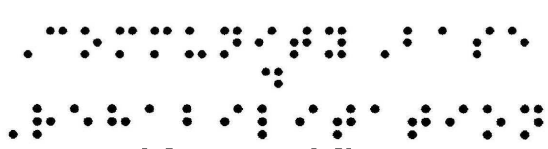
- Reduce the gap
- Demonstrate how people affected by leprosy can get benefit from CBR
- Highlight the particular characteristics of leprosy to CBR personnel who may not be familiar with the disease and its consequences
- Leprosy experts understand the need to integrate their services and programmes into mainstream CBR developments.





- ## Now More Than Ever
- Current and future scenario
  - Reach to the unreached
  - Reduce poverty and promote inclusion
  - Convention on the Rights of Persons with Disabilities
  - Leprosy CBR technical Guide /CBR Matrix/CBR Guidelines
  - **“Leprosy & CBR – Now More Than Ever”**
- PROVINCIAL AND NATIONAL GOVERNMENT AGENCIES, POLITICAL LEADERS, MEDIA

# Community-Based Rehabilitation



👍 Thank you – Kapun Khap

